

PARISH SURVEY - NOV. 1975 - (13 responses)

+General Satisfaction with Parish



+Most Satisfying

- church activities w/parish supporters
- ✓✓ - Priest, willing to join in, talk with everyone
- Tranquility of the building
- The kind of people here; they all believe in Christ's loving kindness
- Common bond with parish members
- our desire to move forward
- The spirit of its members; its love
- Eucharist service is lovely
- worship has improved greatly - more meaningful
- The Early Mass with prayer book

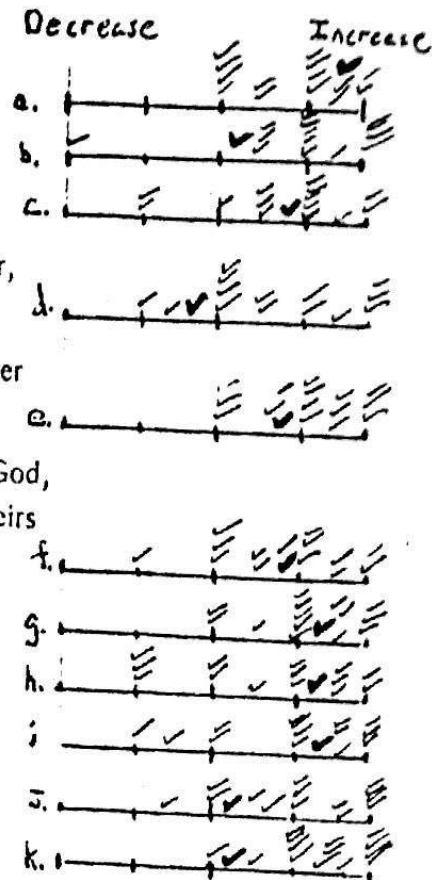
+Least Satisfying

- ✓✓ - Not enough members, seeing church $\frac{1}{2}$ full
- ✓✓ - No choir or altar personnel
- The Bishop
- New Service
- Lack of money & people so we can achieve goals
- So much change, especially the Lord's prayer
- Hymns used unfamiliar - hard to follow

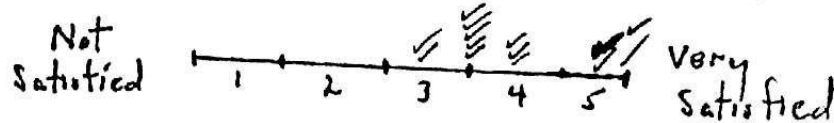
A. My Personal + Spiritual Growth

1. Rate your own growth for this past year

- a. ability to accept ourselves and others
- b. capacity to love other people and to forgive them
- c. capacity for hope and joy
- d. identification for the needs and struggles of the poor, oppressed and weak
- e. recognition of our need for the help of God and other people
- f. knowledge of our identity as sons and daughters of God, as being unique and worthwhile persons who are heirs of the Kingdom of God
- g. openness to other people and all of life
- h. sense of purpose
- i. ability to confront difficult situations
- j. ability to be interdependent with others
- k. capacity to faithfully cope with change.



2. In general how do you feel about your growth



3. How, if at all, has your membership in the parish affected your growth? What helped or hindered?

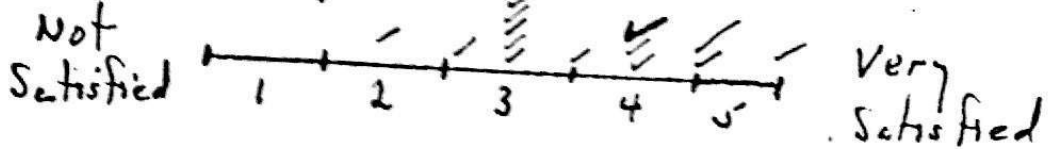
Being able to understand other people's needs + my own a lot better than I ever did. Being able to talk over my prob with the people at the church has helped me quite a bit - has also let me see some of the goodness in them. Gives me good to my ability to accept other for themselves + to know myself, my strengths + weaknesses. Being w/ others, to feel their strength, help me. To be more aware of my own strength + short comings. Very much so - helped me to cope w/ working w/ many w/ people. The congenial atmosphere has even lowered my blood pressure (smile) can't find nicer people anywhere.

4. How, if at all, has Fr. Gallagher helped or hindered your growth?

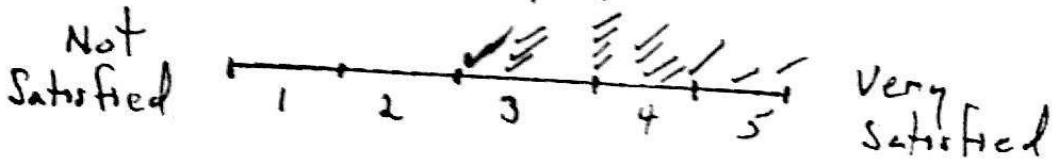
He is a realist - helps me to see + cope w/ life realistically. By just being the person he is. Has given hope for St. E. He is warm + open person who makes you feel very at ease when he talks + has helped me greatly to understand myself! He has helped - has helped me to face my weakness + not let it be a stumbling block. At the time Fr. G came I was feeling mighty low, he has helped me to have a new lease on ever w/ me. Sermons helped. Helped. He put forth quite a bit of his ideas + energy into the church + the

Growth in Ministry to Others

1. How satisfied are you with your own ministry to others in your daily life?



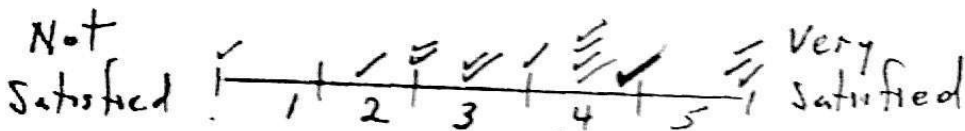
2. How satisfied are you with the ministry of the whole parish to other people?



3. What has helped or hindered?
 • Too few people doing too much.
 • other people.
 as individuals we lack self confidence but as a whole parish we try to work together well!
 helped • The love of all the people • We have helped each other by facing things as they are • not
 should be, we were the only ones in our own way. • Too many ideas can be thrown out. Not
 itic •

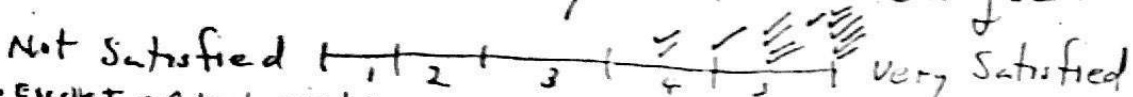
Growth in Active Membership

1. How satisfied are you with the increase in membership this year?



2. What has helped or hindered our growth?
 of some people. • A lot of people don't know the church is here or if they do know it's open. • Our tendency to live in the past • Father has helped our growth we had stopped it.
 involved of the community. Also a sense that everyone belongs. • The lack of good singing.
 ent projects we've had but helped.
 Parish Priest

On the whole how satisfied are you with Fr. Gallyher's work?



Comments:
 • Excellent • A truly great • caring person. • Is doing all he can since he enjoys the
 personal interest he has of the people of the parish. • By talking about a lot of things
 either priest • He does a good job. • Did a good job. • ...

Complete data on questions 11
on newspaper in office, 1977
JUNE 1977 (22 responses)

PARISH SURVEY - ST. ELISABETH'S

- How long have you been at St. E.? Less than 2 yrs. 6;
2-5 yrs. 5; 5-15 yrs. 6; more than 15 yrs. 5.
- Are you - a member of the parish? Yes 19 No 3
a member of the Vestry? Yes 11 No 2
a member of the staff? Yes 4 No 2
- How often do you attend worship at St. E.? Weekly 21; twice
a month 1; monthly ; infrequently .
- In general, how satisfied are you with the way things are
going at St. E. now?
Very unsatisfied 1 2 3 4 5 6 Very satisfied

There have been several changes around St. E. since January.
How do you feel about:

- Relocation of the altar and associated changes in worship space
I don't care for it at all 1 2 3 4 5 6 I like it a lot
- Use of the Proposed Book of Common Prayer
I don't care for it at all 1 2 3 4 5 6-11 I like it a lot
- Having three staff instead of one person 1/3 time
Not helpful 1 2 3 4 5 6-13 Very helpful
- Having a woman priest on the staff
I don't like it at all 1 2 3 4 5 6-18 I like it a lot
- The push for deeper level of commitment and involvement of
lay people in parish life
It isn't helpful 1 2 3 4 5 6 Very helpful

Have you made this commitment? Yes 11 No 5

- Have you made use of Christian Education resources available
-within the parish Yes 9 No 8
-SEEK Yes 9 No 8

Why or why not? *Looking for depth*

*Why not? No chance - work schedule
time + distance to travel*

Is there something you are looking for in Christian Education
that the parish is not providing? Yes 5 No 9

If yes, then what are you looking for?

*more lay involvement in Ltr
meaning approach to C.E. for children
Historical aspect of the Church*

*UKN. Continuous Adult Ed. + Bible Study.
Classes for children*

More help in working w/ my own child on C.E.

11. What is most satisfying to you about life at St. E.?

assortment of People

Desire to work & worship as a Christian Family.

people are friendly

Being a part of it.

The communication among the people.

12. What is least satisfying?

13. Comments...

ST. ELISABETH'S
PARISH SURVEY MAY 1978

1. HOW LONG HAVE YOU BEEN AT ST. ELISABETH'S

LESS THAN 2 YEARS xxxxxxxxxx 2-5 YEARS xxxxxx

5-15 YEARS xxxxxx MORE THAN 15 YEARS _____

2. ARE YOU - A MEMBER OF THE PARISH? YES ^{xx} xxxxxxxxxxxxxxxxxxxx NO x

- A MEMBER OF THE VESTRY? YES xxxxx

- A MEMBER OF THE STAFF? YES xxx

3. HOW OFTEN DO YOU ATTEND WORSHIP AT ST. ELISABETH'S?

WEEKLY xxxxxxxxxxxxxxxxxxxx TWICE A MONTH x

MONTHLY x INFREQUENTLY x

4. IN GENERAL, HOW SATISFIED ARE YOU WITH THE WAY THINGS ARE GOING AT ST. ELISABETH'S NOW?

	x			xx		xxx	xxxx xxxxx	xxxx xxx	
VERY DISSATISFIED	1	2	3	4	5	6			VERY SATISFIED

5. IN GENERAL, HOW SATISFIED ARE YOU WITH THE WAY WE NORMALLY CELEBRATE THE EUCHARIST ON SUNDAY?

	x			xx	xxxxx xxxxx	xxxx xxx	
VERY DISSATISFIED	1	2	3	4	5	6	VERY SATISFIED

PLEASE EXPLAIN:

- In both areas there improvements that could be made (things aren't perfect) but the parish is moving, the liturgy is solid and things keep getting better.
- People participate (praise the Lord for the prayer book)
- Thank you for sub-deacons, acolytes
- The whole church is involved regarding the church year (Lent, Easter etc)
- Some things about behavior on altar
- Needs to be a little more tighter
- It is a nice service for the amount of people

- We have minimized the confusion & people seem to participate fairly well.
- Perhaps we should have a more varied & organized musical program.

6. WHAT IS YOUR FEELING ABOUT THE USE OF THE HIGH ALTAR DURING LENT?

LIKED IT xxxxxxx DON'T LIKE IT xxxxx DOESN'T MATTER xx

7. WHAT IS YOUR FEELING ABOUT THE USE OF RITE 1 (TRADITIONAL LANGUAGE) DURING LENT?

LIKED IT xxxxxxx DON'T LIKE IT xxxx DOESN'T MATTER x

- Never used it before - hate having to "talk that way" find using a different rite hard (finding it in the book, keeping place etc - tried to help new people with it & we were both lost sometimes)

8. REGARDING MEMBERSHIP GROWTH

I AM NOT SATISFIED WITH OUR RATE OF GROWTH 1 | 2 | 3 | 4 | 5 I AM VERY SATISFIED

9. REGARDING YOUR OWN SPIRITUAL LIFE

a. I AM NOT SATISFIED WITH WHAT THE PARISH PROVIDES TO HELP MY SPIRITUAL LIFE 1 | 2 | 3 | 4 | 5 I AM VERY SATISFIED

b. WHAT HAS BEEN MOST HELPFUL?

- The programs that are being given
- C.L.I., celebration of Eucharist on Wed., Parish retreat
- Being back in touch with the church
- C.L.I.; all over climate in parish
- Community spirit
- All the work that has been done
- Spirit of unity and love. Both of the clergy's involvement in the life of the parish.
- C.L.I. am able to contact clergy & other members & freely discuss anything re: my spiritual life

- The people - the place
- The format of the service itself

c. WHAT DO YOU WISH THE PARISH WOULD DO?

- Use different "Eucharistic Thanksgiving" prayers in mass
- "Grow"
- Have more recreation (all go to the lakes or somewhere & have an outdoor picnic & sports & have some fun)
- It's not what I wish the parish to do; it's me
- Adult education in more specific topical areas is weak e.g. courses on death & dying, Bible study, special lenten reading, etc.

10. REGARDING CHRISTIAN LIFE INSTITUTE

- a. I PLAN TO DO IT THIS YEAR ✓✓✓✓✓✓✓✓?
- b. I HAVE ALREADY COMPLETED IT ✓✓
- c. I DO NOT PLAN TO PARTICIPATE _____
- d. I AM NOW ATTENDING ✓✓

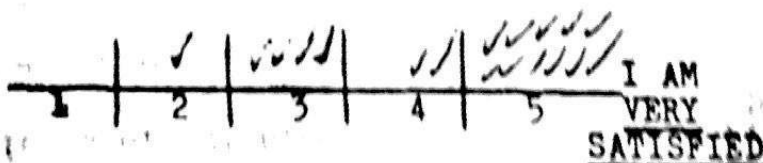
e. IF YOU HAVE DONE IT, WHAT WAS MOST HELPFUL?

- The presentation was thorough. Fr. Bob has a way about him - he gets the message across - he is also very patient
- The opportunity to ask questions, discuss things I haven't talked about since grade school (church doctrine & application)

f. IF YOU DO NOT PLAN TO PARTICIPATE, WHY NOT? IS THERE SOMETHING ELSE YOU WANT?

IN THE PAST YEAR THE PARISH HAS ESTABLISHED AN ELECTED VESTRY, DEVELOPED THE FIRST PART OF A SET OF BY-LAWS, ESTABLISHED JOB DESCRIPTIONS FOR COMMITTEES AND LAY LEADERS, DEVELOPED A VESTRY MANUAL.

IN GENERAL I AM NOT SATISFIED WITH HOW WE ARE PROGRESSING ON OUR BUSINESS AFFAIRS



COMMENTS:

- Business affairs are becoming more refined, which is needed.
- "need to know more"
- I have the feeling the parish is still over burdened - especially the vestry members
- The feeling we aren't going to be able to do all of the work
- It's been very helpful to know who are the people in responsible positions and also to know more definitely what some of the laws of the church are
- A real sense of progress, order and control (as much as humanly possible)
- Need to know more communication, etc.

WHAT IS MOST SATISFYING ABOUT LIFE AT ST. ELISABETH'S

- Closeness of clergy & parish members
- Spiritual growth of each member is possible, encouraged
- Spirit of love and christian witness
- The Priests, the close-knit "family" community.
- The leadership - the response of volunteers.
- The freedom to grow Parish functions
- The closeness with the church and with Father Gallagher & Mother Bickerton
- It provides me a chance to come & use the church
- Climate & relationship in parish & Fr. Gallagher's ministry
- The contact with church sharing
- The people are all good people
- Various things, people, worship, our priests
- Participating in things in the church
- People ministering to one another
- Leadership of the vicar
- cooperation
- Acceptance of people to others
- The interactions of members of parish - very accepting, caring group of people
- The people. Friendly people
- Truly a christian family
- The close feeling of the parishoners
- The relaxed atmosphere, tolerance, receptiveness; use of PBCP

13. WHAT IS LEAST SATISFYING?

- When no one answers the phone
- I think the sermons should be more biblically based & a little more conservative
- I can't get down here as much as I like, I wish I could get more support from the parish & priests to form & discipline myself to prayer.
- When someone (even myself) is supposed to be doing a job and they don't . It bugs the hell out of me. (I must pray for patience! and I must continue to pray for the priests & Mary Lancy)
- The kids are sometimes disturbing
- Number of congregation
- Really nothing at this point
- Lack of committment
- Need to have better planning
- Too much work. Not enough people helping
- Not able to relate to Mother Bickerton's style of ministry
- I think there should be perhaps a few more "extra Sunday" services and activities

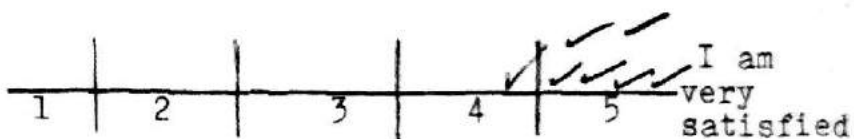
St. Elisabeth's Church
Clergy Evaluations - Vestry & Parish Officers Only

May, 1978

FATHER GALLAGHER

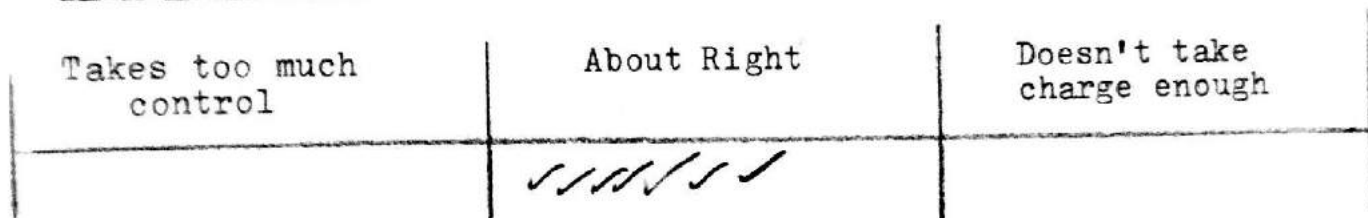
1. General Satisfaction

I am not satisfied
with Fr. Gallagher's
ministry at St.
Elisabeth's



Comments:

2. Leadership of Parish



Comments:

3. General comments on conduct, attitude, etc.

4. Sermons

a. Do you find his sermons helpful?

Usually	About half the time	Seldom
✓✓✓✓	✓✓✓	

b. Sermon content

Often speaks to my life	Some hit me, some don't	Often meaningless to me
✓✓✓	✓✓✓✓	

Talks down to me	About right	Often over my head
	✓✓✓✓✓	✓

c. Sermon Delivery

Too stiff	About right	Too loose
	✓✓✓✓✓	
Too organized	About right	Not organized enough
✓	✓✓✓✓✓	
Too short	About right	Too long
	✓✓✓✓	✓ ✓ sometimes ✓
Often holds my attention	Sometimes	I often lose interest
✓✓✓✓	✓✓✓✓	

Comments:

TAKES CONTROL WHEN APPROPRIATE
ENCOURAGES AND ENABLES OTHERS (VESTRY ETC) TO
TAKE CONTROL WHERE THEY SHOULD

3. General comments on conduct, attitude, etc.

TAKES PEOPLE SERIOUSLY AND ENCOURAGES
THEM TOWARD GROWTH AND DEPTH IN CHRISTIAN FAITH
THERE HAVE BEEN A LOT OF CHANGES IN THE PARISH
SINCE HE ARRIVED, WITH THE HELP OF THE SPIRIT,
HE HAS POINTED THE PARISH IN A NEW DIRECTION

Comments:

Has help to improve the ministry with parish, guides and directs
those of the parish to a better understanding about themselves and God.
Better community relationships. Improved overall church conditions

3. General comments on conduct, attitude, etc.

Has good rapport with the vestry and the parish
Good business manager
Explores all fields of improvement w/ members of parish

3. General comments on conduct, attitude, etc.

Fr. Gallagher has a keen organizational ability and an ability to find and use the talents of each individual for the good of the congregation as a whole. Through his efforts the attitude of the congregation has been turned from passive "staying afloat" to actively working toward growth and achievement. Fr. Gallagher is very easy to work with. His insight and encouragement has helped the congregation to be much more effective in stewardship and in communication. He has helped the parish become more aware of a "family" relationship, and he is genuinely concerned with spiritual growth and development of the congregation.

Personally, I have found Fr. Gallagher to be a source of insight and a willing spiritual advisor. Discussions with him are always helpful in pinpointing a problem area, whether spiritual or emotional, and finding a way to deal with a problem in a constructive and effective manner. He is always open to new ideas, a good sounding board for opinions, and always encourages spiritual growth and development on an individual level. I have on several occasions sought his guidance and advice and have a deep respect for his judgment and "both feet on the ground" way of dealing with life.